



September/October 2011

THE VOTER

www.lwvcla.org

The League of Women Voters of Clallam County

In This Issue:

Calendar of Events	Tues, Sept 13 2:00—4:00 pm
President's Message	Tues, Sept 20 7:00 pm
Education Study Consensus	Tues, Oct 4 1:00—4:00 pm
Candidate Debates	Tues, Oct 11 7:00—9:00 pm
Forum on Affordable Care Act	Sat, Oct 15 2:00—3:00 pm
Opportunities for Volunteers	Mon, Oct 17 7:00—9:00 pm
Education Proposal Sequim High School	
Donations for Scholarships	Wed, Oct 19 7:00—9:00 pm
About Website	Sat, Oct 22 2:00—4:00 pm
State Convention	Thurs, Oct 27 2:00 pm
Book Discussion Group	
Overpopulation Discussion Group	
League Leadership	

Calendar of Events

*Along-Side-the-League Activity: **Book Discussion Group***
Port Angeles Library

Forum "The Affordable Health Care Act and You"
at Linkletter Hall, Olympic Medical Center

Education Consensus Study
Sequim Public Library

Candidate Debate, Sequim City Council
at the Sequim City Council Chambers

Debate on Initiatives 1163 and 1183
Port Angeles City Council Chambers

Candidate Debate, Parks & Recreational District 1
(S.A.R.C.) Positions 3 and 5 and
Sequim School Board Director at Large
Sequim Senior Center

Candidate Debate, Port Angeles City Council
at the Port Angeles City Council Chambers

Candidate Debate, County Commissioner District No. 1
And Port Angeles School Board, Port Angeles Library

*Along-Side-the-League Activity: **Discussion Group***
Sequim Public Library

Letter from the President:

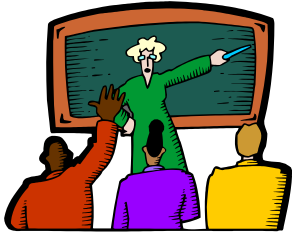
Some exciting things are happening in the areas of education. You'll see articles in this issue about a new initiative to partner with the Sequim High School, another about our providing feedback to national on their education study. Lots of opportunities for participation. For the partner project, contact Ruth Marcus (RMarcus@olypen.com) and for the national study, contact Carrol Hull (CAHull@msn.com). The Health Care committee is planning another forum. Also debates for the general election are coming up. More opportunities for participation. To help with the health care forum, contact Sara Johnson (sara@waltandsara.com) or to help with the debates, contact Laura Lanka (daisie53@wavecable.com). This is your League; I hope you will take advantage of some of these opportunities.

We need someone who has experience in grant writing. These grants are generally within the League either at the state or national levels.

If you want to stay better informed about what's happening with the League on the national level, just go to LWVUS.org and you can get on one of their lists to receive copies of emails between members about a variety of topics.

Dues reminder: there are a few of you out there who have not sent in your check for \$60 to renew your membership. Please do this today.

B



Education Study Consensus Study Entitled: "Role of the Federal Government in Public Education"

The League of Women Voters of the United States (LWVUS) is asking all members to take part in a consensus study: "Role of the Federal Government in Public Education." This is the most important consensus concerning education that the League has attempted to formulate in many years. Since this position will become part of the League Program and will be the basis for our efforts in education on the national, state and local levels, this project is of great magnitude.

The LWVUS established the scope of the study and the timeline. They also developed relevant background resources and materials which can be utilized by local Leagues to inform members. Finally, they outline the focus and consensus questions to be considered.

In total there are 15 questions. Here is a sampling of the consensus questions which we are being asked to consider:

- What should be the role of the federal government in public education?
- Should there be a national curriculum such as the Common Core Standards that were developed by the National Governors' Association and the Council Of Chief State School Officers?
- Should there be nationally curriculum aligned to the national standards and assessments?

Coming to consensus does not entail a "vote." Consensus is reached through discussion and an exchange of ideas. It is not

unusual for a local league to be unable to come to consensus on all questions. The results of this consensus process are sent to the U.S. League and from this input national positions are established.

We hope that many Clallam League members will participate in this process. We will divide the material and process into two segments. Members will be asked attend two meetings and will also be requested to do some important reading before attending both meetings.

As a retired educator, I see this as an opportunity for all of us who are interested in education in this country to have some important input. The results of the U.S. League's position will certainly impact our work on the local and state level here in Washington.

Please put these dates on your calendar:

Tuesday, October 4 1:00—4:00 pm
Sequim Public Library

Tuesday, November 1 1:00—4:00 pm
Port Angeles Library

We will be contacting you by phone during September to find out if you are willing to participate and if you will be able to attend one or both meetings.

Please contact Carrol Hull cahull@msn.com
or 360-683-5199.

Meet the Candidates at LWVCLA Debates this October

The League of Women Voters of Clallam County, together with co-sponsors KONP, Sequim Senior Activity Center, and the Sequim Gazette, will hold the following candidate debates in Sequim and Port Angeles.

- **Sequim City Council**, Positions 1 and 2
 Tuesday, October 11, 7:00—9:00 pm
 At the Sequim City Council Chambers,
 152 West Cedar Street
 Position 1: Peter Duncan / Erik Erichsen
 Position 2: Laura DuBois, Ron Fairclough
 And John Miller*
 Position 7: Candidates Eric Miller and
 Candace Pratt will be present
- **Park and Rec District 1 (S.A.R.C.) and
 Sequim School Board**
 Monday, October 17, 7:00—9:00 pm
 Sequim Senior Center, 921 E. Hammond
 Park and Rec Position 3: Melinda Griffith/
 Pete Church-Smith
 Park and Rec Position 5: Sonu Deol/
 Jan Richardson
 School Board Director at Large:
 Walter Johnson/Stephen Rosales
- **Port Angeles City Council**
 Wednesday, October 19, 7:00—9:00 pm
 Port Angeles City Council Chambers
 321 East Fifth Street
 Position 1: Brad Collins/Drew Schwab
 Position 5: Dan Di Giulio/Noelle Fuller
 Position 6: Sissi Bruch/Don Perry
 Position 7: Cody Blevins/Cherie Kidd
- **County Commissioner District No. 1
 and Port Angeles School Board**
 Saturday, October 22, 2:00—4:00 pm
 Port Angeles Public Library
 2210 S. Peabody Street
 Commissioner: Linda Barnfather/
 Jim McEntire
 School Board Position 5: Steven Baxter/
 Arlene Wheeler

* The top two candidates from the primary election results will debate in this position.

Voter Services is also scheduling one debate program considering voter initiatives 1183 and 1167 on Saturday, October 15, 2:00—3:00 pm at Port Angeles City Council Chambers. All initiatives and referendum measures can be found online at:

http://www.sos.wa.gov/elections/initiatives/referenda_2011.aspx

1183 (privatization of the state liquor control). This measure would close state liquor stores and sell their assets including the liquor distribution center. The state would license private parties to distribute spirits and to sell spirits in retail stores meeting certain criteria, subject to specified training and compliance requirements. The measure establishes licensing fees for sale and distribution of spirits based on the licensee's sales revenues. It would change some wine distribution laws and allow non-uniform wholesale pricing for wine and spirits.

Initiative 1167 , sponsored by the SEIU, aims to restore cuts to the state home-care program that were approved by the Legislature in December. It also would reinstate the home-care training requirements imposed by another initiative in 2008 – just in case the Legislature eliminates or delays them this year. This measure would reverse any legislation enacted in 2011 that amends or repeals certain statutes governing criminal background checks, training, and certification requirements for long-term care workers serving elderly or disabled persons. It would direct that 65% of the December 2010 cuts to long-term in-home care hours be restored using revenue collected through extending sales taxes to nonresidents and debt collection services. It would prohibit class-wide reductions in hours, require audits, and cap administrative expenses.

Respectfully submitted,
 Laura Lanka

A Forum on the Affordable Care Act

September 20, 7:00 p.m.

Linkletter Hall, Olympic Medical Center, Port Angeles

In 2010 the Patient Protection and Affordable Care Act was passed by Congress and signed by President Barack Obama. The Access to Health Care Committee is presenting this forum to inform citizens of the content of the act, how it is being implemented and what impact it is expected to have on the medical delivery system, on the cost of medical insurance, and on access to health care for the uninsured.

Featured speakers are:

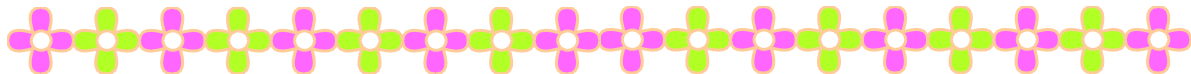
- Chevon Lee, Washington State Office of the Insurance Commissioner who will speak on what is in the act.
- Eric Lewis, Chief Executive Officer, Olympic Medical Center who will speak to the impact on hospital care
- Tom Locke, Clallam County Health Officer, who will talk about prevention services and public health

The committee has been studying the issues for years with a major focus on how health care might be made available to all American citizens. It has been demonstrated that early

preventive services and early intervention in treatment of disease can reduce morbidity and mortality. Funding medical services by insurance, both private and public, has led to the development of a system of delivery involving high-tech diagnostic and treatment modalities, which is ultimately financially unsustainable. Profit motive encourages high-cost testing and expensive treatments.

Clallam County League of Women Voters has adopted the national position in favor of a single-payer system. Savings would result from lowering the administrative costs for providers—they would not have to deal with multiple private insurance companies and, each of their billing systems. Medicare overhead is 5% compared with 15% to 30% for private insurance. Such savings could provide coverage for the uninsured for the short term. Long term goals should include development of effective preventative care and health maintenance strategies which will enable cost containment.

Sara Johnson, Health Care



Volunteer Opportunities

"do as much or as little as you like!"

What You Can Do

Who You Should Contact

Debates in October Laura Lanka: daisie53@wavecable.com; 504-2247
Or Sharon Lee: leeport@olympen.com; 683-8145

Health Care Forum Sara Johnson: sara@waltandsara.com; 582-0272

National Education Study Carrol Hull: CAHull@msn.com; 683-5199

Local Partnership with SHS Ruth Marcus: RMarcus@olympen.com; 681-2205

President, Nancy Esteb, has no Vice President this year. She would really appreciate someone who could help her get some of the smaller things done that she would ordinarily ask a Vice President to do: getting The Voter out to those who don't have email, making some arrangements, and other small things as they come up. If you would like to help in this way, each task would be taken on if you would like to do it. Contact her: betseesteb2@yahoo.com

LWV's Educational Proposal to Sequim High School

The Education Committee is presenting a Civics Educational Proposal to Sequim High School this fall. The plan is that our local League will offer a Certificate of Participation to seniors who are interested in community service hours, extra credit, experience and participation with our Observer Corps, Voter Services, Voter Registration and our Publicity Committee. The goal is to inspire students to be educated voters, to participate in League work and events, and to know that their voice and vote can make a difference.

We request your participation. If you would like to support this partnership between the League and Sequim High School, and you

are currently, or have been, involved in the Observer Corps or have helped at a Voter Services debate or forum, please step forward to be a part of this innovative partnership. It doesn't require a huge commitment. It requires your concern to get young people involved in the democratic process. It will mean meeting your student a few minutes before the event, talking to them about the process, sitting with them, and talking to them after the event about what they heard and what it means. For more information, email Rmarcus@olympen.com.

Ruth Marcus, Co-Chair



If you have the means, you could help our local League in a special way. By donating \$60 you could provide membership for someone who otherwise would be unable to become an active member because of financial concern. When we give a scholarship for membership we require active work for the League.

LWVCLA Website

The website: www.lwvcla.org, is currently undergoing revision. We have added a members only access page. You will receive an email with login information—username and password. Once the updating has been completed, this page will have information such as the current membership roster, information about studies, about policies and procedures, and observer corps.

The navigation order is different and the content on all of the pages has changed. We hope to make the website be a useful resource for members. If you would like to offer input or suggestions, please contact Genaveve Starr at genaveve@msn.com.

About the State Convention

Five Clallam LWV members traveled in the to the Tri Cities for the state convention: Nancy Esteb, Carrol Hull, Dottie Nicassio, Marcia Radey, and Lou Templeton.

Here are some excerpts of articles about the convention taken from the Seattle Voter:

Kathy Jorgenson:

The National League was represented by two members of their board: Norman Turill, from Portland, Oregon, the first man to serve on the national board and Marcia Merrins, from Buffalo, New York. The major "buzz" at the convention was a controversial ad aired by the national LWV, with funding provided by the Sierra Club. This ad aired in Massachusetts and Missouri and denounced the nay votes of Senators Claire McCaskill (D-Mo) and Scott Brown (R-MA) against the re-authorization of the Clean Air Act. The caption at the end of both ads read "Brought to you by the League of Women Voters." (To view the ads, go to the rollcall.com website and search there for "League of Women Voters hits Brown, McCaskill.") See also the statement by LWVUS president Elisabeth MacNamara on the LWVUS website at www.lwv.org.

Marcia Merrins defended the ad as being acceptable in view of the League's position on clean air and public health. Many in attendance disagreed and asserted that the ads were in violation of the League's principles, its nonpartisan policy, and that they potentially jeopardized the League's 91-year reputation for fairness and nonpartisanship...

Workshops on Friday included Voter Services/Voter Registration, Program Planning, and Civil Discourse in Partisan Times. Assisting with voter registration has been one of the core services of the league. However, it has been found to be ineffective merely to have a presence at a festival without a "draw" the voter registration table. Effective venues for voter registration

include naturalization ceremonies, farmers markets, and retail establishments. It was also suggested that voter registration drivers could be partnered with other organizations...

On Saturday Mike Schwenk, Vice President of Battelle, spoke on the need to educate policy makers regarding science and the potential consequences of policy decisions on the environment and human health.

Kathy Hibbard, of the Pacific Northwest National Laboratory, gave a talk entitled "Climate Change and Humans: What is our Future?" She said that the models for the emissions of carbon dioxide and nitrous oxide do not work. The current goal is to limit climate change to an increase of no more than 2 degrees centigrade. Without implementing practices to control climate change, it will be necessary to develop carbon capture technology.

Ultimately, Hibbard continued, there is a need to reduce the demand for energy. One of the risks of cultivating bio-energy crops is a decrease in the production of agricultural crops and an adverse effect on the global food supply. Recent forest management practices (fire suppression) have created undergrowth in the forest and that has provided an unlimited supply of fuel for forest fires. As a result, forest fires burn hotter, faster, effect the canopy, and leave the soil sterile.

Jill Conrad, Tribal Affairs Program Manager for the Department of Energy at Handford, talked about the history of vibrant trade along the Columbia River among the various tribes. The Columbia River is a regional waterway as well as a source of power and irrigation; Conrad advocated the protection of cultural and heritage resources of Native Americans.

Marcia Merrins' talk was called "The League, Non Partisanship, and Elections in a New Era." The League's reputation is enhanced

Continued on page seven

State Convention, continued from page six
by its ability to provide unbiased information in a safe, civil environment. She suggested that each league review its nonpartisan policy every year, preferably at the first board meeting.

As someone who has moderated both issue forums and candidate forums, I found the Saturday workshop on moderator training helpful. Specifically, we were advised to have a script, to describe the format and ground rules in advance, and to state that no recording would be allowed and that all cell phones and recording devices should be turned off.

In a talk on Saturday evening, Lura Powell, the nonpartisan chair of the State Redistricting Commission, described the history

the nonpartisan chair of the State Redistricting Commission, described the history of the redistricting process in Washington and the challenge of drawing district boundaries to ensure that each district has close to the same number of people while setting the boundaries so as not to divide existing political boundaries.

From Ginna Owens:

...As a comparative newcomer to this League, I found that Convention offered an unparalleled opportunity to meet other leaguers and become better acquainted with the breadth of league work in Washington...

The five of us left the convention energized and excited for the potential of league activities.



Along-Side-the-League Activity:

Book Discussion Group

The Book Club will meet September 13th, 2:00—4:00 pm at Port Angeles Library for a Discussion of the book: The Soul of Capitalism, by William Greider, will be led by Carrol Hull. Participants will be deciding what books they will read during the next three months.

Along-Side-the-League Activity:

Human Overpopulation Discussion Group

Don Wilkin joined the League a few years ago convinced of two things:

- 1) that current global human overpopulation represents the greatest fundamental threat to civilization in the world's history; and
- 2) that the League, as one of the most politically influential organization in the most influential country in the world, is uniquely positioned to do something useful about it.

Don and colleagues, Carrol Hull and Judith Parker, seek ten to twelve committed individuals to join a discussion group on ways the League can take the lead in addressing

this challenge. The book World on the Edge: How to Prevent Environmental and Economic Collapse, by Lester Brown will be used as a discussion text.

An organizing meeting will be held on Thursday, October 27, at 2 p.m. at the Sequim Library. The schedule and location of the subsequent four discussions will be determined by participants at that meeting. Contact Don Wilkin, 582-1790 (wilkin@olympus.net) or Carrol Hull, 683-5199 (cahull@msn.com) if you would like to participate. The books will cost \$12 and will be distributed at the organizing meeting.

League Leadership

Nancy Esteb, President
360.683.4763 / betseesteb2@yahoo.com

Nancy Wiersema, Secretary
683-1812 / NWiersema@olympus.net

Karen Westwood, Treasurer
683-1882 / kwestwood@seanet.com

Ruth Marcus, Membership Co-Chair
681-2205 / rmarcus@olympus.net

Marcia Radey, Membership Co-Chair
683-9622 / chasmard@juno.com

Genaveve Starr, Newsletter/Webmaster
360.683.7637 / genaveve@msn.com

Pat MacRobbie, Program Coordinator
681-2056 / macrobbie@olympus.net

Carrol Hull, Sustainability/Education
683-5199 / CAHull@msn.com

Sonja Rotter, Water Study
452-2413 / benrotr@mindspring.com

Sara Johnson, Health Care
582-0272 / sara@waltandsara.com

Sue Erzen, Observer Corps
681-4916 / s.erzen6@olympus.net

Candace Pratt, Advisor
582-0114 / candacecep@wavecable.com